



Nexion



LITHIC



---

INDEX

WHO WE ARE	2-3
LITHIC - THE COLLECTION	4-5
SPACES	6-39
RANGE	38-43
TECHNICAL INFO	44

A NEW WAY  
TO LOOK AT  
SURFACES: AS  
PARTS OF A  
WHOLE, OF YOUR  
SPACE, OF YOUR  
OWN EXPERIENCE.

---

WHO WE ARE

## ENVISIONING SURFACES AS BLENDS OF BEAUTY AND PERFORMANCE.

We are the Indo-Italian brand who discloses a **new perspective on tiles**, for those who understand the role of **beauty as a well-being enabler** in life.

Our ceramic surfaces, conceived as unique blends of beauty and performance, are designed to suggest a **holistic vision of the space**.

Each and every surface is the result of the capability of our designers to connect with any source of inspiration and bring unique products to life. Each and every surface created by us is capable of **elevating the personality of a space**.

**We operate differently**, innovating in the way we see and do things. Always adopting our customers' viewpoint and standing by them from the idea generation to the tile posing, for the peace of mind of everyone who is involved.

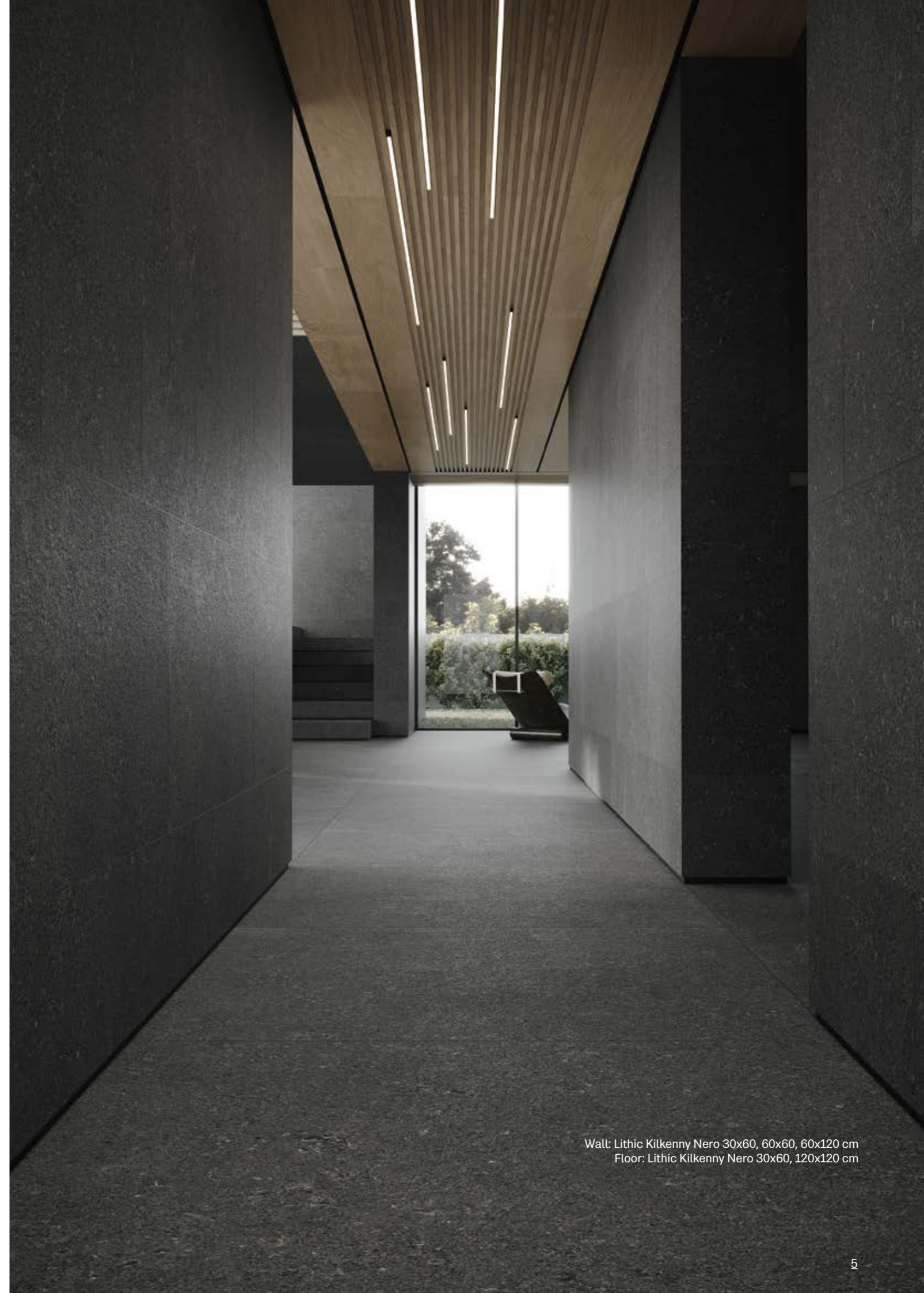
Our way is a new way to look at surfaces: as parts of a whole, of your space, of your own experience.

## CRAFTING EXQUISITE STONE LOOK SURFACES

At Nexion, our commitment to excellence extends beyond individual tiles to the creation of harmonious, sophisticated stone surfaces.

- **Seamless Integration:** Each tile is designed to complement the others, forming a balanced and cohesive surface.
- **Natural Elegance:** We carefully select and replicate the finest patterns and textures found in natural stones and marbles.
- **Advanced Techniques:** Utilizing cutting-edge technology, we enhance the inherent beauty of natural materials, ensuring durability and longevity.
- **Artistic Vision:** Our designers and artisans collaborate to create surfaces that are both aesthetically pleasing and functionally superior.

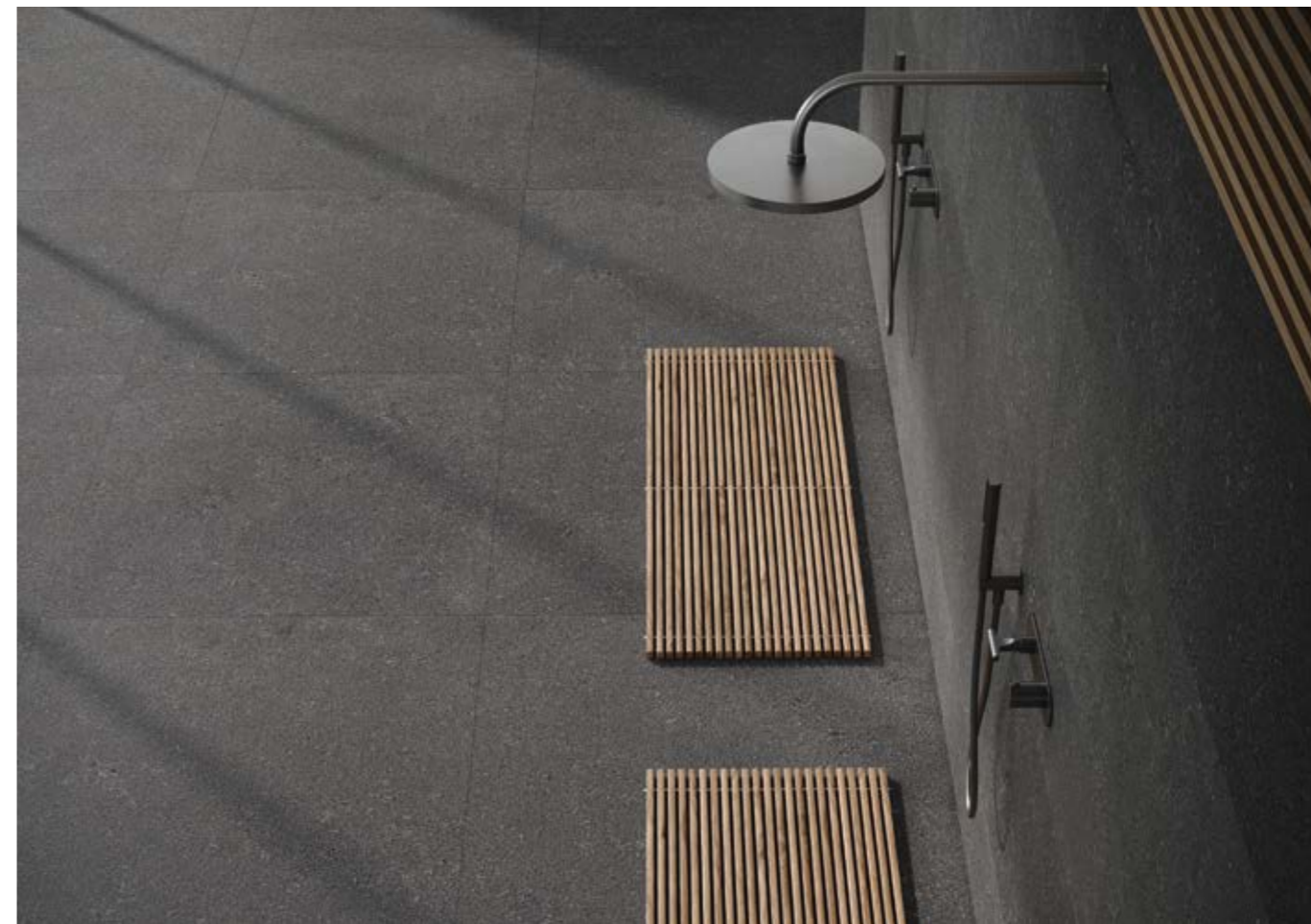
Explore the unparalleled artistry and innovation of Nexion stone surfaces, and discover how we can elevate your space with our meticulously crafted designs.



Wall: Lithic Kilkenny Nero 30x60, 60x60, 60x120 cm  
Floor: Lithic Kilkenny Nero 30x60, 120x120 cm



Wall: Lithic Kilkenny Nero 30x60, 60x60, 60x120 cm  
Floor: Lithic Kilkenny Nero 30x60, 120x120 cm



Wall: Lithic Kilkeny Nero 30x60, 60x60, 60x120 cm  
Floor: Lithic Kilkeny Nero 30x60, 120x120 cm



Wall: Lithic Kilkenny Nero 30x60, 60x60, 60x120 cm  
Floor: Lithic Kilkenny Nero 30x60, 120x120 cm



Wall | Floor: Lithic Roccia Portoghese 120x240 cm



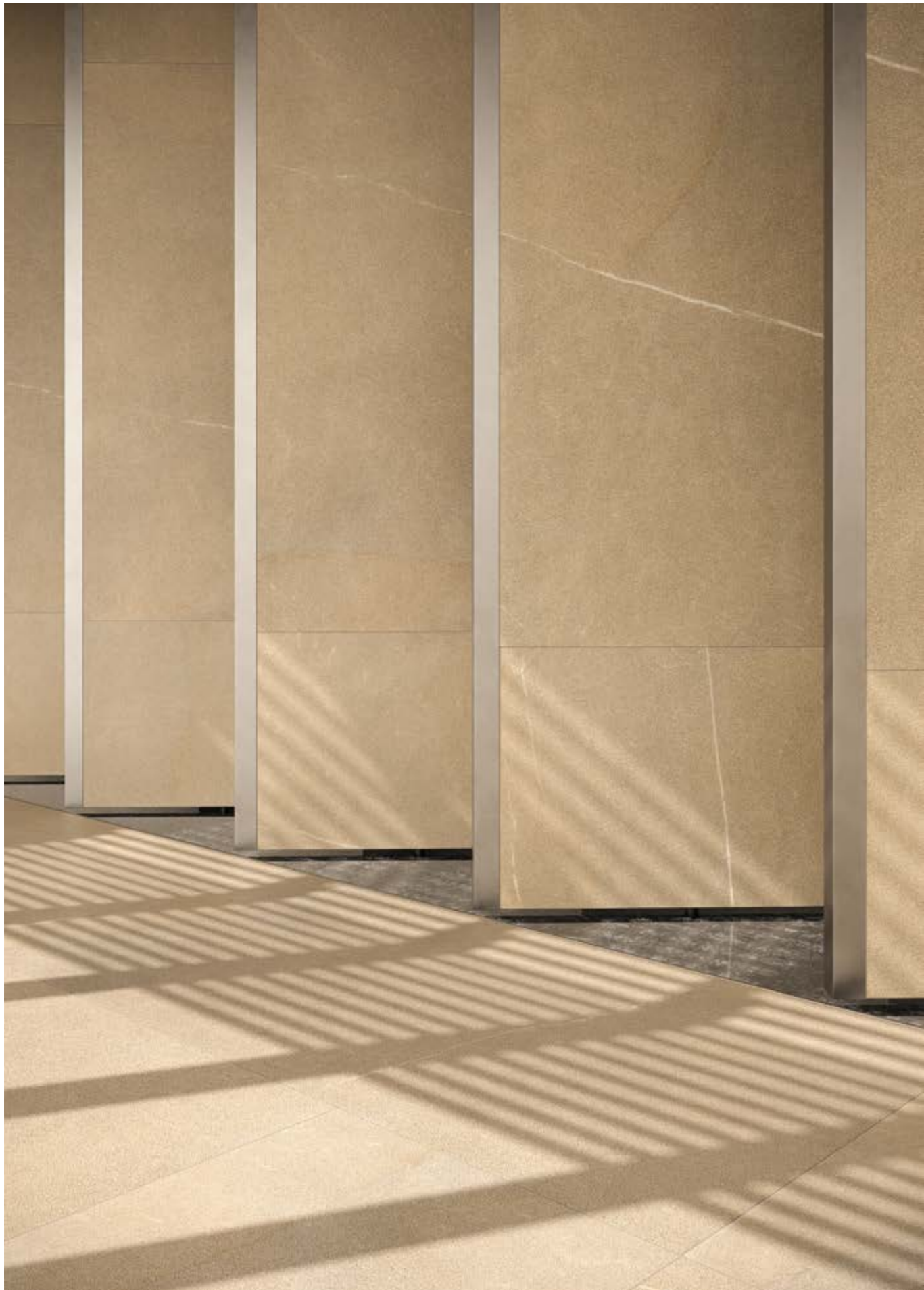


Wall | Floor: Lithic Roccia Portoghese 120x240 cm





Wall | Floor | Furniture: Lithic Alpi Argento 120x120 cm



Wall: Lithic Pietra Piasentina 120x240 cm  
Floor: Lithic Pietra Piasentina 120x120 cm



Wall: Lithic Pietra Piasentina 120x240 cm  
Floor: Lithic Pietra Piasentina 120x120 cm



Wall: Lithic Vicenza Beige 80x160 cm  
Floor: Terraelino Calce 120x120 cm



Wall: Lithic Vicenza Beige 80x160 cm  
Floor: Terraelino Calce 120x120 cm



Wall: Lithic Basalto Grigio 120x240 cm  
Floor: Lithic Basalto Grigio 120x120 cm  
Reception desk: Lithic Gabbro Sfumato 120x240 cm



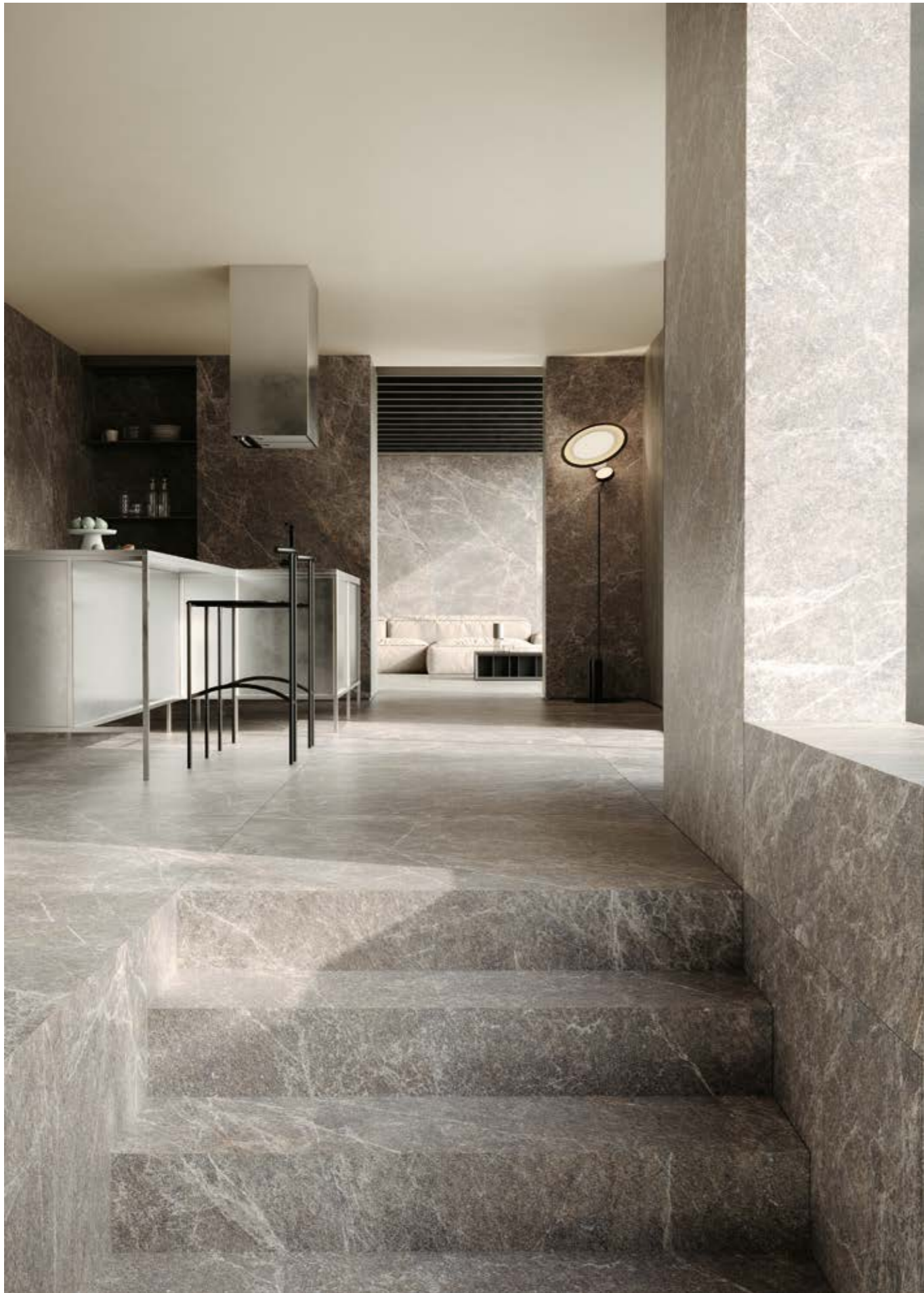
Wall: Lithic Basalto Grigio 120x240 cm  
Floor: Lithic Basalto Grigio 120x120 cm  
Reception desk: Lithic Gabbro Sfumato 120x240 cm



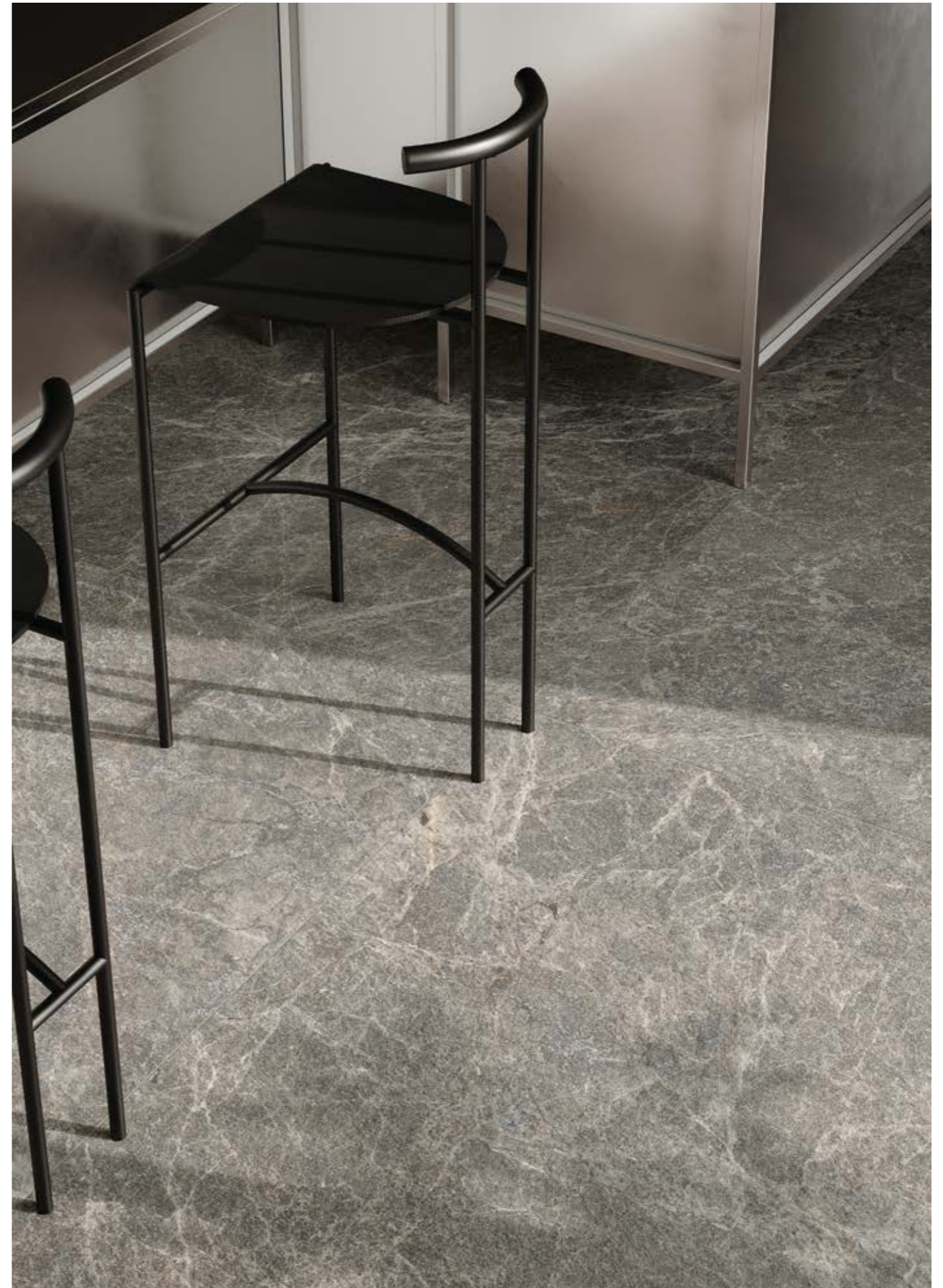




Wall | Floor: Lithic Gabbro Sfumato 120x120 cm



Wall | Floor: Lithic Gabbro Sfumato 120x120 cm



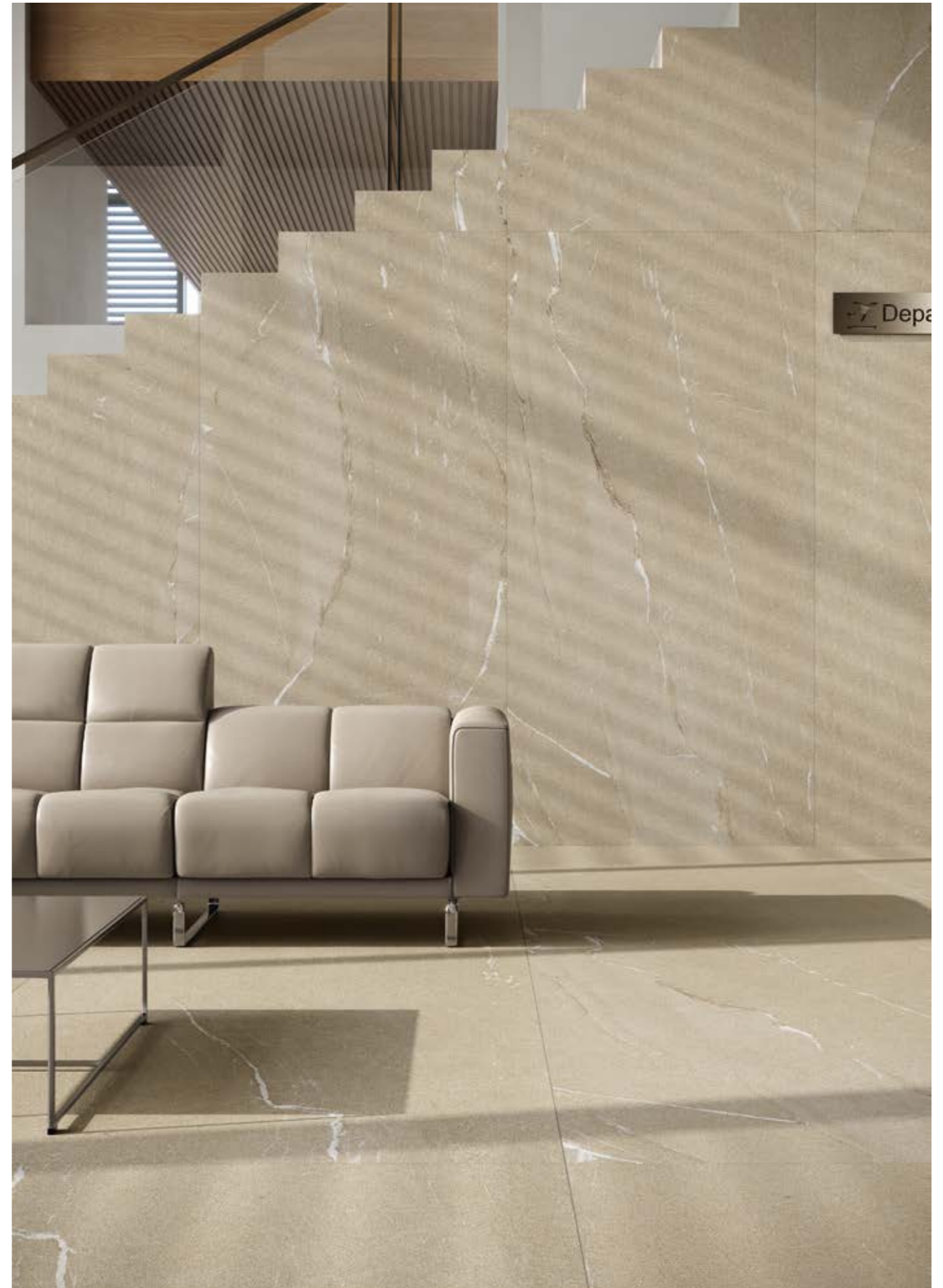
Floor: Lithic Gabbro Sfumato 120x120 cm



Wall | Floor: Lithic Pannonia 120x240 cm  
Desk: Calacatta Nero Lappato Matt 120x240 cm



Wall | Floor: Lithic Pannonia 120x240 cm  
Desk: Calacatta Nero Lappato Matt 120x240 cm





---

THE RANGE

## 8 INSPIRATIONS 6 SIZES

The Lithic collection revisits the warm essence of eight natural stones, offering both the possibility of creating total look settings, and of combining the proposals with each other, or in combination with other design inspirations. The range of sizes consists of six variants, allowing the creation of multiple installation patterns in response to the most varied needs of contemporary architecture.

Pietra  
Piasentina

Vicenza  
Biege

Roccia  
Portoghese

Pannonia

Alpi  
Argento

Basalto  
Grigio

Gabbro  
Sfumato

Kilkenny  
Nero

## BASIC ELEMENTS

### 8 INSPIRATIONS

Covering a wide range of pure stone expressions.

### 1 SURFACE

Absolute Matte.

### 6 SIZES (120x240/80x160/120x120/60x120/60x60/30x60)

To exploit all architectural and creative potential.



Pietra Piasentina



Vicenza Biege



Roccia Portoghese



Pannonia

**Full body-colored porcelain stoneware (International standard)**  
**Vitrified stoneware (Indian standard)**  
**Rectified | 9 mm thickness**

#### NEXION INSTALLATION SUGGESTIONS

Nexion recommends 2 mm joint for optimal aesthetics taking advantage of the tile's caliber in multi-sized applications. Both cement and epoxy grout can be used; grout-design color matching advisable for optimal aesthetics. It is not recommended to use grouting with colored pigments in contrast with the color of the tiles. For detailed installation guidelines log on [www.nexiontiles.com](http://www.nexiontiles.com)

## BASIC ELEMENTS

### 8 INSPIRATIONS

Covering a wide range of pure stone expressions.

### 1 SURFACE

Absolute Matte.

### 6 SIZES (120x240/80x160/120x120/60x120/60x60/30x60)

To exploit all architectural and creative potential.



Alpi Argento



Basalto Grigio



Gabbro Sfumato



Kilkenny Nero

Full body-colored porcelain stoneware (International standard)  
Vitrified stoneware (Indian standard)  
Rectified | 9 mm thickness

#### NEXION INSTALLATION SUGGESTIONS

Nexion recommends 2 mm joint for optimal aesthetics taking advantage of the tile's caliber in multi-sized applications.  
Both cement and epoxy grout can be used; grout-design color matching advisable for optimal aesthetics.  
It is not recommended to use grouting with colored pigments in contrast with the color of the tiles.  
For detailed installation guidelines log on [www.nexiontiles.com](http://www.nexiontiles.com)

**NEXION QUALITY STANDARDS – All tests are carried out by Italian laboratories accredited according to ISO/IEC 17025:2017**

Standards according to ISO 13006: Annex G - EN 14411: Annex G. Dry - Pressed Ceramic Tiles.

QUALITY ITEMS	TECHNICAL FEATURE	STANDARD METHOD ISO	UNIT	REQUIREMENTS ISO 13006:2018(E) E <sub>v</sub> ≤0,5% GROUP BIa	NEXION Values			
					SIZE < 1200 mm		SIZE ≥ 1200 mm (SLABS)	
					%	mm	%	mm
<b>DIMENSIONS AND SURFACE QUALITY</b>	Width	ISO 10545 - 2	mm	± 0,3%	± 0,1%	± 0,8 mm	± 0,1%	± 1,0 mm
	Length	ISO 10545 - 2	mm	± 0,3%	± 0,1%	± 0,8 mm	± 0,1%	± 1,2 mm
	Thickness	ISO 10545 - 2	mm	± 5,0%	± 4,0%	± 0,5 mm	± 4,0%	± 0,5 mm
	Straightness of Side	ISO 10545 - 2	mm	± 0,3%	± 0,1%	± 0,8 mm	± 0,1%	± 1,0 mm
	Rectangularity	ISO 10545 - 2	mm	± 0,3%	± 0,1%	± 1,3 mm	± 0,1%	± 1,5 mm
	Surface Flatness	ISO 10545 - 2	mm	± 0,4%	± 0,1%	± 1,8 mm	± 0,2%	± 3,0 mm
	Surface Quality	ISO 10545 - 2	-	A minimum of 95% of the tiles are to be free from visible defects which can impair the appearance of a major area of tiles	95%			
<b>PHYSICAL PROPERTIES</b>	Water Absorption	ISO 10545 - 3	%	≤ 0,5%, Individual 0,6%	Avg. ≤ 0,08%, Individual 0,2%			
	Modulus of Rupture	ISO 10545 - 4	N/mm <sup>2</sup>	Min. 35, Individual Min. 32	Min. 42			
	Breaking Strength	ISO 10545 - 4	N	Not less than 1300	Min. 1800			
	Moisture Expansion	ISO 10545 - 10	mm/m	-	0,02			
	Surface Abrasion	ISO 10545 - 7	Class	Minimum Class II Report abrasion class and cycles passed	CLASS IV (> 2100 Cycles)			
	Resistance to surface abrasion of glazed tiles intended for use on floors							
	Mohs Hardness of surface	NA	-	-	8			
	Coefficient of linear thermal expansion from ambient temperature to 100 °C	ISO 10545 - 8	K <sup>-1</sup>	As declared by the Manufacturer	6x10 <sup>-6</sup> K <sup>-1</sup> max			
	Thermal Shock Resistance	ISO 10545 - 9	-	As declared by the Manufacturer	No damage			
	Crazing Resistance: glazed tiles	ISO 10545 - 11	-	Required	No damage for Min. 10 Cycles			
	Bulk Density	ISO 10545 - 3	g/cc	2,2	2,2			
	Impact Resistance	ISO 10545 - 5	-	As declared by the Manufacturer	0,55			
	Frost Resistance	ISO 10545 - 12	-	As declared by the Manufacturer	No change			
	Slip Resistance	ANSI A137,1	-	As declared by the Manufacturer	DCOF > 0,41			
DIN 51130		-	R-09					
Small color differences	ISO 10545 - 16	-	Plain colored tiles only where required GL: ΔE < 0,75 UGL: ΔE < 1,0	No change				
<b>CHEMICAL PROPERTIES</b>	Resistance to staining	ISO 10545 - 14	Class	Minimum Class 3	Class 4			
	Resistance to household chemicals and swimming pool salts	ISO 10545 - 13	Class	Minimum B	Minimum A			
	Resistance to acids & alkalis	ISO 10545 - 13	Class	As declared by the Manufacturer	Minimum B			

**PACKAGING INFO**

**Shipments to domestic markets (India)**

Nominal Size cm	Thickness mm	Pcs. x box	Sq. mt x box	Weight x box (Kg)
120x240	9	1	2,87	61,00
80x160	9	2	2,55	54,00
120x120	9	2	2,87	60,00
60x120	9	2	1,43	30,00
60x60	9	4	1,43	31,00
30x60	9	6	1,07	23,00

**Worldwide shipments**

Nominal Size cm	Thickness mm	Pcs. x box	Sq. mt x box	Weight x box (Kg)	Box x pallet	Sq. mt x pallet	Pallet weight (Kg)
120x240	9	1	2,87	61,00	37	106,30	2347,00
80x160	9	2	2,55	54,00	28	71,40	1582,00
120x120	9	2	2,87	60,00	24	68,88	1510,00
60x120	9	2	1,43	30,00	32	45,82	1003,00
60x60	9	4	1,43	31,00	34	48,69	1077,00
30x60	9	6	1,07	23,00	40	42,72	943,00

**Size**

Nominal Size cm	Actual Size cm
120x240	119,8x239,8
80x160	79,8x159,8
120x120	119,8x119,8
60x120	59,8x119,8
60x60	59,8x59,8
30x60	29,8x59,8

Tiles are packaged in a random manner and company cannot guarantee the type of faces inside each package.





# Nexion

Design, Marketing & Global Sales | Via 2 Giugno, 13 | 41042 Fiorano Modenese | Modena (Italy) | [globalcs@nexiontiles.com](mailto:globalcs@nexiontiles.com)

Headquarters & Indian Sales | Nexion Surfaces Private Limited | 1104-1105, Shapath V, S.G. Highway, 380 015 | Ahmedabad, Gujarat (India) | [indiancs@nexiontiles.com](mailto:indiancs@nexiontiles.com)

[nexiontiles.com](http://nexiontiles.com)