

# Nexion interprets Travertine

## TRAVERTINE COLLECTION

The Travertine collection conveys the deep flavor of the homonymous sedimentary rock, with a very porous consistency, used in ancient Rome to enrich monuments and private residences. Rediscovered in the following centuries, Travertine became symbol of Baroque architectural treasures that can still be admired today in Rome and in many other Italian cities.

Thanks to its raw materials knowledge, and perfected the most advanced polishing techniques, Nexion devised a new deep and transparent surface reinterpreting the beauty of Travertine vein cut, a technique that has been used since ancient times to make veins visible.

The result is a collection that attributes a contemporary personality to a stone of great prestige, a symbol of timeless beauty that keeps its charm intact over the centuries. A collection that brings the best inspiration of contemporary Italian design in every type of setting and context.

## Nexion about

Nexion is a brand of Nexion International, a multinational ceramic company that is the result of a partnership between two large family groups that have always been leaders in their reference markets: Ceramiche Speranza, the best in its class Italian firm founded in 1961, that has setup the state of the art manufacturing facilities in India together with the Aghara family, one of the leading players in ceramics and sanitary ware in India since 1977.

With mastery of technology and design, we turn the best of the Italian tradition and lifestyle into contemporary ceramic surfaces that can be source of inspiration for architects and designers around the world.

Open-minded and keen to learn from customers and partners, we are committed to deliver the best quality and service and we believe that our work ends when our clients fulfill their desires and achieve their goals.

Headquarters & Indian Sales  
Nexion International Private Limited  
1104, Shapath V, S.G. Road  
Ahmedabad, Gujarat (India)  
indiancs@nexiontiles.com  
www.nexiontiles.com

Design, Marketing & Global Sales  
Via 2 Giugno, 13  
41042 Fiorano Modenese  
Modena (Italy)  
globalcs@nexiontiles.com  
www.nexiontiles.com

TRAVERTINE



Full body-colored porcelain stoneware (International standard) | Vitrified stoneware (Indian standard)  
Rectified | 9 mm thickness

**2 Inspirations**  
interpretation of marble, in an elegant and suggestive tones.



Veincut Beige 80x160 cm  
**F86TRTBOYRO** Lappato Matt  
**F86TRTBOLRO** Full Lappato



Veincut Silver Grey 80x160 cm  
**F86TRTGOYRO** Lappato Matt  
**F86TRTGOLRO** Full Lappato

**4 Sizes**  
to exploit all architectural and creative potential.

120x240 cm | 80x160 cm | 120x120 cm  
60x120 cm



Veincut Beige 120x240 cm  
**F14TRTBOYRO** Lappato Matt  
**F14TRTBOLRO** Full Lappato



Veincut Silver Grey 120x240 cm  
**F14TRTGOYRO** Lappato Matt  
**F14TRTGOLRO** Full Lappato



Veincut Beige 120x120 cm  
**F12TRTBOYRO** Lappato Matt  
**F12TRTBOLRO** Full Lappato



Veincut Silver Grey 120x120 cm  
**F12TRTGOYRO** Lappato Matt  
**F12TRTGOLRO** Full Lappato



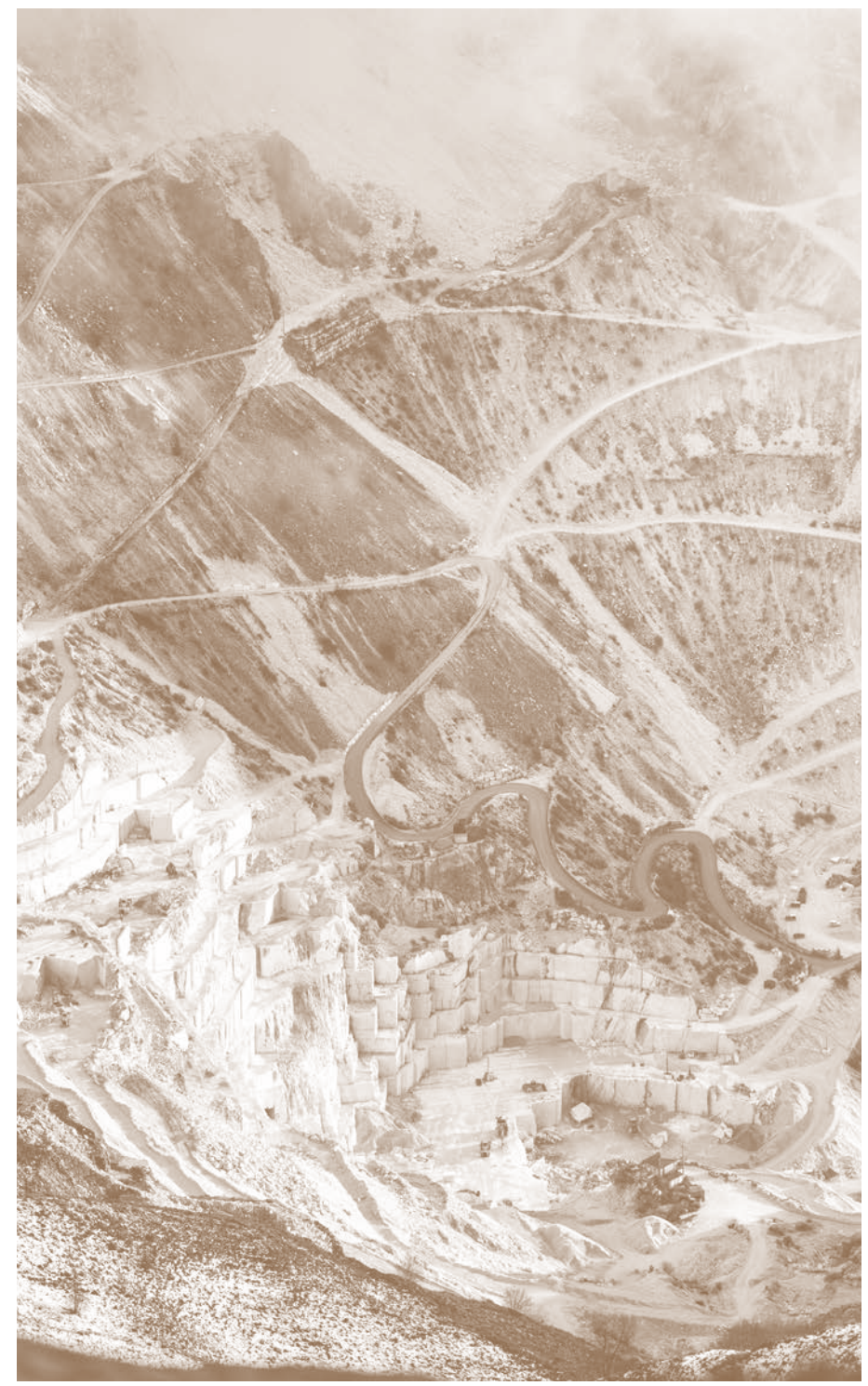
Veincut Beige 60x120 cm  
**F62TRTBOYRO** Lappato Matt  
**F62TRTBOLRO** Full Lappato



Veincut Silver Grey 60x120 cm  
**F62TRTGOYRO** Lappato Matt  
**F62TRTGOLRO** Full Lappato

### Nexion installation suggestions

Nexion recommends 2 mm joint for optimal aesthetics taking advantage of the tiles caliber in multi-sized applications. Both cement and epoxy grout can be used; grout-design color matching advisable for optimal aesthetics. It is not recommended to use grouting with colored pigments in contrast with the color of the tiles. For detailed installation guidelines log on [www.nexiontiles.com](http://www.nexiontiles.com)



Printed in May 2022

### Nexion quality standards

ALL TESTS ARE CARRIED OUT BY ITALIAN LABORATORIES ACCREDITED ACCORDING TO ISO/IEC 17025:2017  
Standards according to ISO 13006: Annex G - EN 14411: Annex G, Dry - Pressed Ceramic Tiles.

QUALITY ITEMS	TECHNICAL FEATURE	STANDARD METHOD ISO	UNIT	REQUIREMENTS ISO 13006:2018(E) E <sub>1</sub> < 0,5% GROUP B1a	NEXION Values			
					SIZE < 1200 mm		SIZE ≥ 1200 mm (SLABS)	
					%	mm	%	mm
<b>DIMENSIONS AND SURFACE QUALITY</b>	Width	ISO 10545 - 2	mm	+ 0,3%	± 0,1%	+ 0,8 mm	± 0,1%	+ 1 mm
	Length	ISO 10545 - 2	mm	+ 0,3%	± 0,1%	+ 0,8 mm	± 0,1%	+ 1,2 mm
	Thickness	ISO 10545 - 2	mm	+ 5,0%	+ 4%	+ 0,5 mm	+ 4%	+ 0,5 mm
	Straightness of Side	ISO 10545 - 2	mm	+ 0,3%	± 0,1%	+ 0,8 mm	± 0,1%	+ 1 mm
	Rectangularity	ISO 10545 - 2	mm	+ 0,3%	± 0,1%	+ 1,3 mm	± 0,1%	+ 1,5 mm
	Surface Flatness	ISO 10545 - 2	mm	+ 0,4%	± 0,1%	+ 1,8 mm	+ 0,2%	+ 3 mm
	Surface Quality	ISO 10545 - 2	-	A minimum of 95% of the tiles are to be free from visible defects which can impair the appearance of a major area of tiles	95%			
<b>PHYSICAL PROPERTIES</b>	Water Absorption	ISO 10545 - 3	%	≤ 0,5% Individual 0,6%	Avg. ≤ 0,08% Individual 0,2%			
	Modulus of Rupture	ISO 10545 - 4	N/mm <sup>2</sup>	Min. 35, Individual Min. 32	Min. 42			
	Breaking Strength	ISO 10545 - 4	N	Not less than 1300	Min. 1800			
	Moisture Expansion	ISO 10545 - 10	mm/m	-	0,02			
	Surface Abrasion	ISO 10545-7	Class	Minimum Class -II Report abrasion class and cycles passed	Class III			
	Resistance to surface abrasion of glazed tiles intended for use on floors							
	Mohs Hardness of surface	NA	-	-	4			
	Coefficient of linear thermal expansion from ambient temperature to 100 °C	ISO 10545 - 8	K <sup>1</sup>	As declared by the Manufacturer	6x10 <sup>-6</sup> K <sup>-1</sup> max			
	Thermal Shock Resistance	ISO 10545 - 9	-	As declared by the Manufacturer	No damage			
	Crazing Resistance: glazed tiles	ISO 10545 - 11	-	Required	No damage for Min. 10 Cycles			
	Bulk Density	ISO 10545 - 3	g/cc	2,2	2,2			
Impact Resistance	ISO 10545 - 5	-	As declared by the Manufacturer	0,55				
Frost Resistance	ISO 10545 - 12	-	As declared by the Manufacturer	No change				
<b>CHEMICAL PROPERTIES</b>	Small color differences	ISO 10545 - 16	-	Plain colored tiles only where required GL: ΔE < 0,75 UGL: ΔE < 1,0	No change			
	Resistance to staining	ISO 10545 - 14	Class	Minimum Class 3	Class 4			
	Resistance to household chemicals and swimming pool salts	ISO 10545 - 13	Class	Minimum B	Minimum A			
	Resistance to acids & alkalis	ISO 10545 - 13	Class	As declared by the Manufacturer	Minimum B			

### Packaging info

Shipments to domestic markets (India)

Nominal Size cm	Thickness mm	Pcs. x box	Sq. mt x box	Weight x box (Kg)
120x240	9	1	2,87	61,00
80x160	9	2	2,55	64,00
120x120	9	2	2,87	60,00
60x120	9	2	1,43	30,00

Size	Nominal Size cm	Actual Size cm
80x160	79,8x159,8	
120x120	119,8x119,8	
60x120	59,8x119,8	

### Worldwide shipments

Nominal Size cm	Thickness mm	Pcs. x box	Sq. mt x box	Weight x box (Kg)	Box x pallet	Sq. mt x pallet	Pallet weight (Kg)
120x240	9	1	2,87	61,00	37	106,30	2347,00
80x160	9	2	2,55	64,00	28	71,40	1582,00
120x120	9	2	2,87	60,00	24	68,88	1510,00
60x120	9	2	1,43	30,00	32	45,82	1003,00

Tiles are packaged in a random manner and company cannot guarantee the type of faces inside each package.





